



**2118 S Truckee St, Aurora, CO 80010**





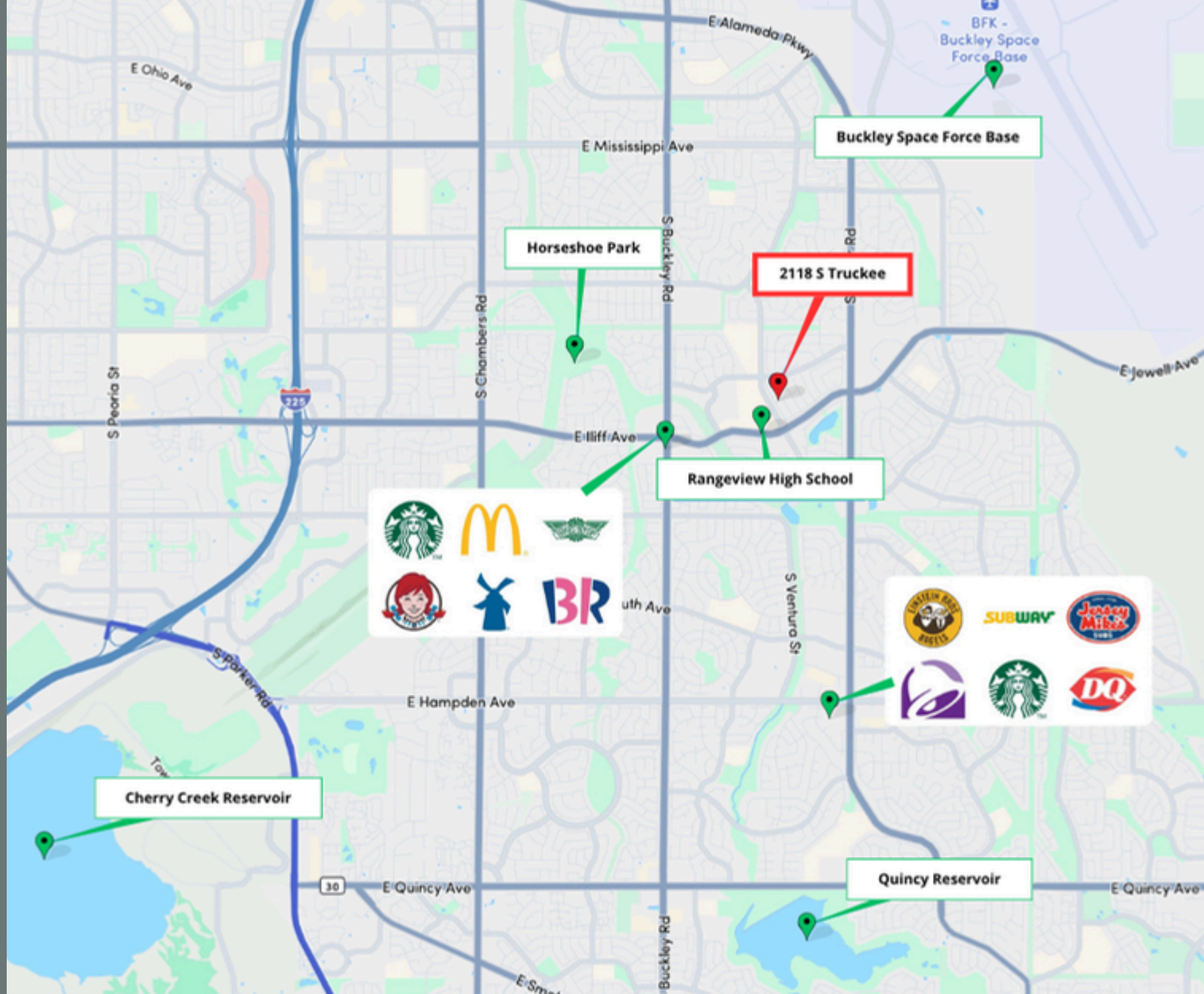
## Well-Maintained Home in a Highly Desirable Aurora Location

Welcome to this well-maintained multi-level home in one of Aurora's most convenient and active locations. Enjoy easy access to nearby parks, trails, and open space, along with close proximity to Cherry Creek State Park, dining, shopping, and entertainment. With quick access to major roadways, commuting to the Denver Tech Center, Buckley Space Force Base, or downtown Denver is simple and efficient. Inside, the home features a bright and functional layout with vaulted ceilings, abundant natural light, and seamless flow between the kitchen, dining, and living areas. The kitchen offers ample cabinetry, stainless steel appliances, and easy access to the dining space, while the cozy living room fireplace creates a warm and inviting atmosphere. Upstairs, the spacious primary suite provides a peaceful retreat, along with additional bedrooms for guests, office space, or flexible use. The finished lower level adds a second living area perfect for a media room, gym, or play space. Step outside to a large backyard with a deck—ideal for relaxing or entertaining—plus a 2-car garage and a thoughtful layout that offers both comfort and versatility.

PROPERTY PHOTOS



MAP



BFK - Buckley Space Force Base

Buckley Space Force Base

Horseshoe Park

2118 S Truckee

Rangeview High School



Cherry Creek Reservoir

Quincy Reservoir

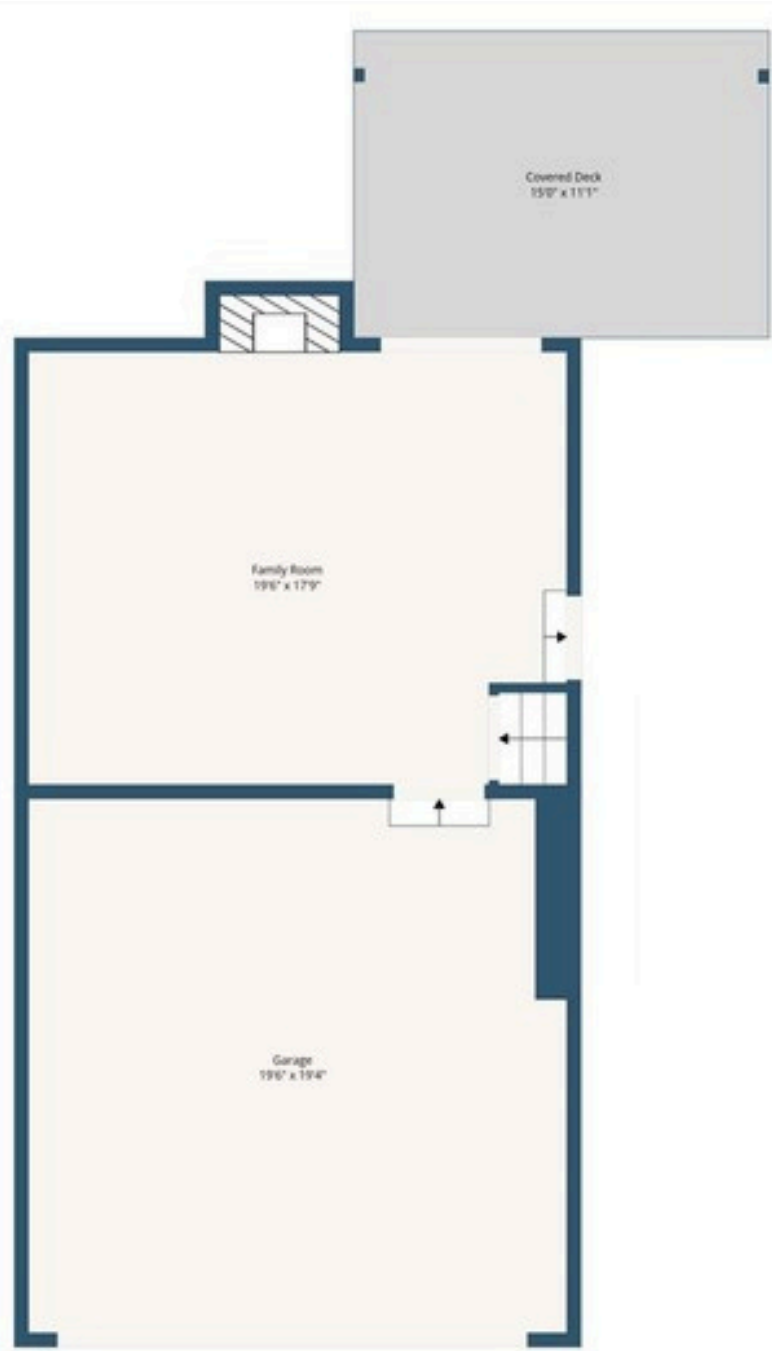
# MAIN LEVEL



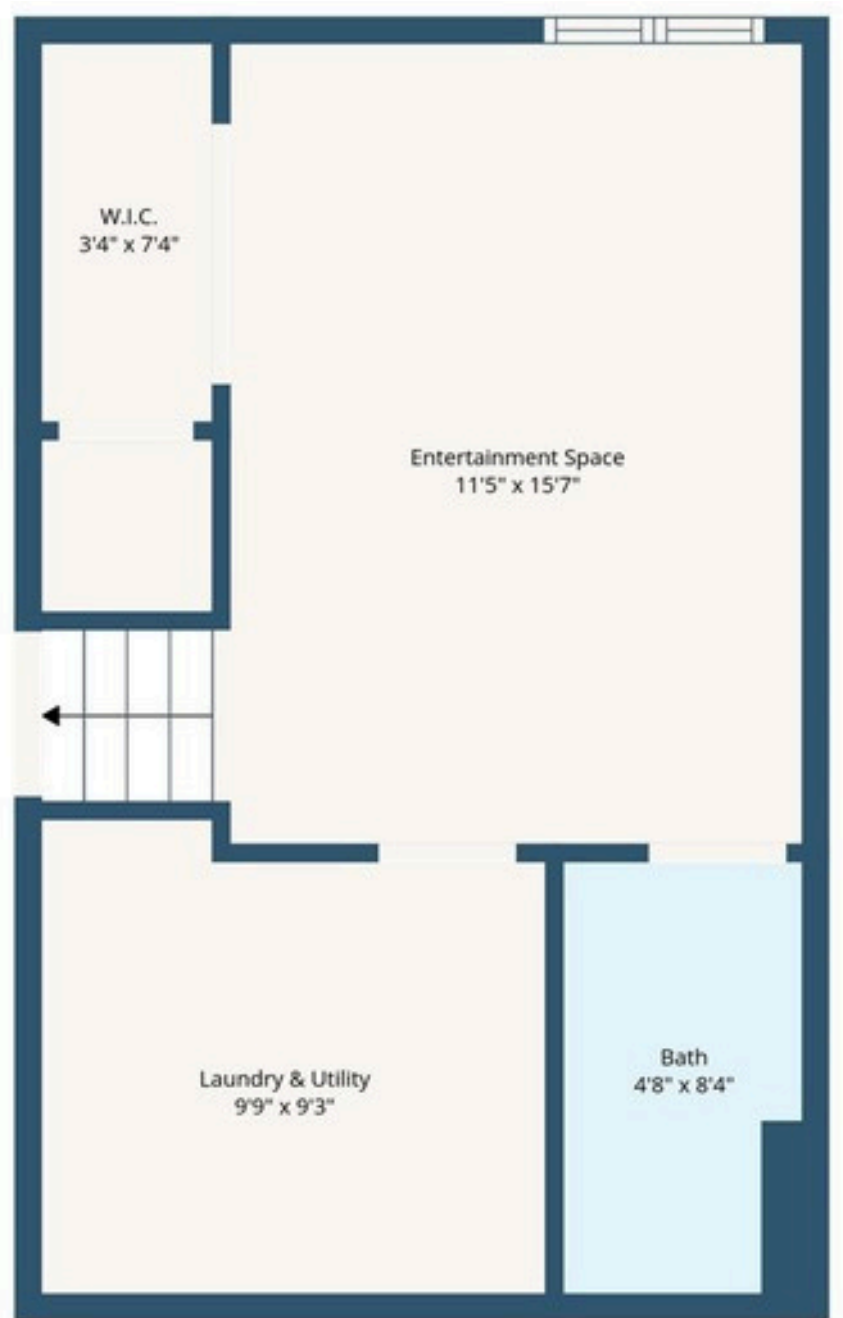
# UPPER LEVEL



# LOWER LEVEL



# LOWER LEVEL





Troy Stephens  
Real Estate Advisor  
720-573-2808

Troystephens@KW.com

[www.GlassPropertiesGroup.com](http://www.GlassPropertiesGroup.com)

**“We help our clients build wealth through Real Estate”**

## Property Description

Beds: 4

Baths: 3

Year Built: 1998

Total SF: 1,726

Parking: 2 Attached Garage

## Special Features

- Bright, open layout with vaulted ceilings & abundant natural light
- Functional kitchen with stainless steel appliances & ample storage
- Large backyard + deck — perfect for entertaining
- 2-car garage with plenty of space
- Minutes to parks: Great Plains, Meadowood & Mission Viejo
- Close to Cherry Creek State Park for outdoor recreation
- Nearby shopping, dining, coffee & entertainment
- Easy commute to DTC, Buckley Space Force Base & Downtown Denver

If you have a brokerage relationship with another agency, this is not intended as a solicitation. All information deemed reliable but not guaranteed. Equal Opportunity Housing Provider.

