



1235 S Josephine St. Denver, CO 80210





CHARMING RANCH-STYLE HOME IN THE BONNIE BRAE NEIGHBORHOOD OF DENVER

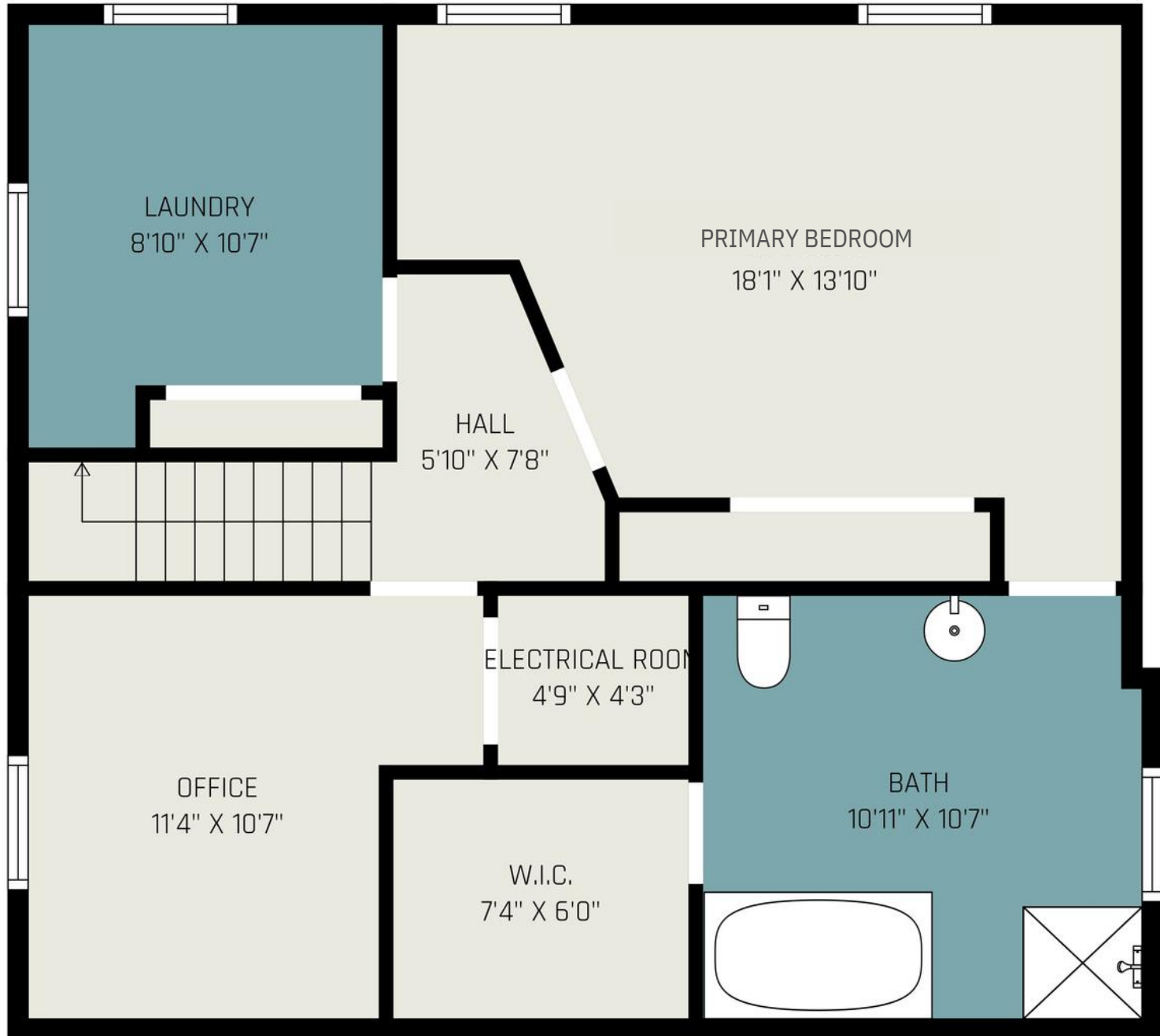
Visit 1235Josephine.com for more details. Bonnie Brae gem! This 3 bedroom, 2 bathroom home offers the perfect blend of classic charm and modern convenience in one of Denver's most coveted neighborhoods. Features include-hardwood floors, fireplace, bright and inviting kitchen with maple cabinets, large backyard with mature trees and a 1 car detached garage. Bonus non-conforming 4th bedroom offers flexibility as a home office, gym, or guest space. Updated double-pane windows throughout the home. Located just minutes from Washington Park. This home offers the ideal balance of urban amenities and charm. You'll be steps from Bonnie Brae's beloved local shops and restaurants. Easy access to I-25 ensures convenient commuting. The excellent walkability score means coffee shops, dining options, and boutiques are all within comfortable walking distance.



MAIN FLOOR



BASEMENT



PROPERTY MAP





Nicholle Taylor Bolton
 Lead Listing Agent | Realtor
 720-741-0613
 Nicholletaylorbolton@KW.com
www.GlassPropertiesGroup.com

“We help our clients build wealth through Real Estate”

www.1235Josephine.com

Property Description

Beds: 3
 Baths: 2
 Garage Attached: 1
 Year Built: 1940
 Total SF: 1,738
 Heating: Forced Air
 Cooling: Central Air

Special Features

- Large Backyard
- Updated double pane windows
- Original hardwood floors
- Large primary suite in basement with en-suite 4 piece bathroom
- Prime location in the highly sought after Bonnie Brae neighborhood
- Blocks from Washington Park
- Easy access to I-25
- Less than 15 minutes from Downtown Denver

If you have a brokerage relationship with another agency, this is not intended as a solicitation. All information deemed reliable but not guaranteed. Equal Opportunity Housing Provider.